

Digital Representation in Design
High-Res case studies

W. Brent Armstrong
ALA 235 | Spring 09

Le Corbusier
Heidi Weber Pavilion
Andre Ryan Wozniak

ASU | School of Architecture and Landscape Architecture

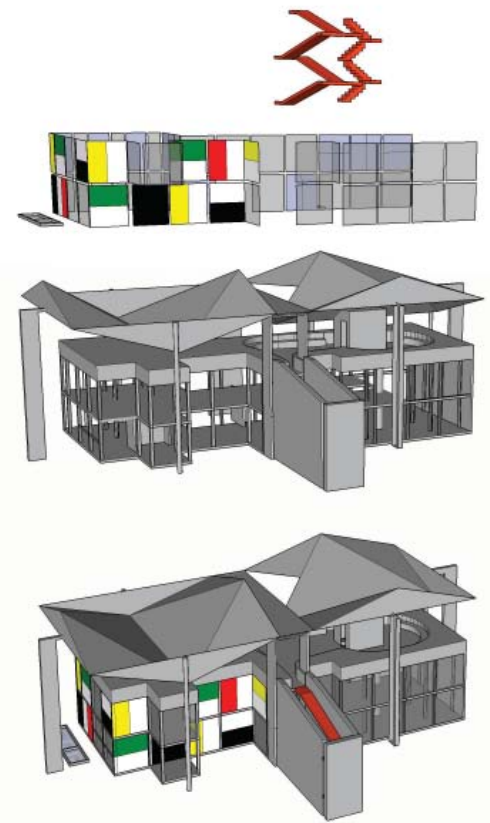


Le Corbusier's
Heidi Weber
Pavilion (1967)

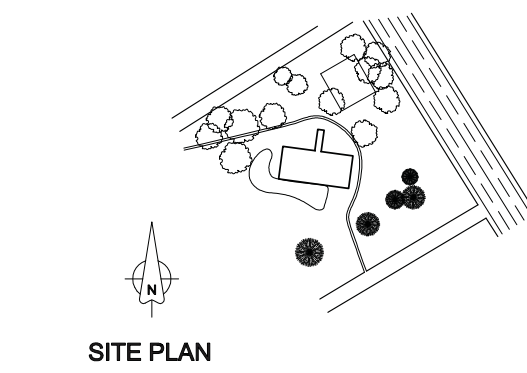
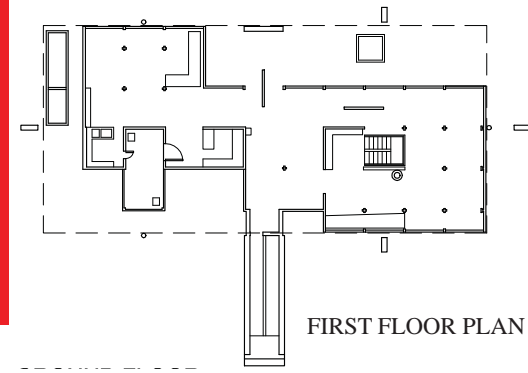
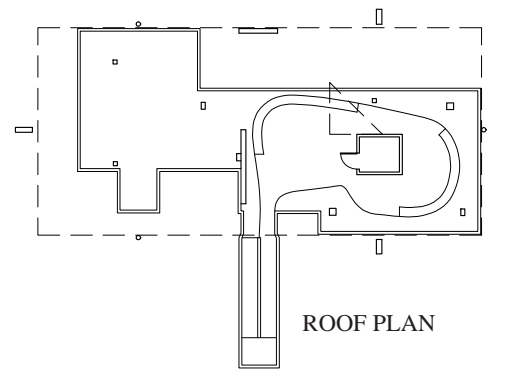
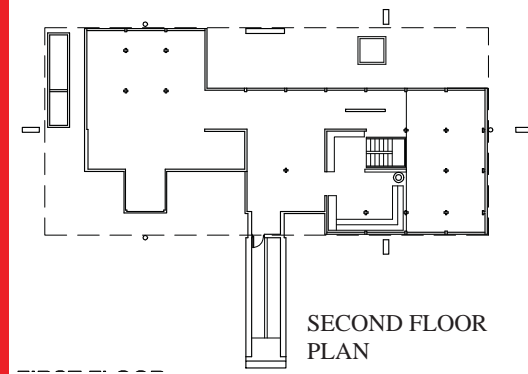


Zurich, Switzerland





Originally designed as a home for Heidi Weber, the pavilion now serves as a museum to honor the work of Le Corbusier. During the building's construction, Le Corbusier died August 27, 1965. The building stands as a reminder of how continually inventive Le Corbusier was throughout his entire career. The brightly colored enamel panels were prefabricated and assembled on site.



Heidi Weber is a successful woman who has earned her wealth by selling modern furniture. Fittingly, she sought out Le Corbusier as the architect for her pavilion. Ironically, in celebrating the success of Heidi Weber, a self-made *woman*, Corbusier based his measurements on 226 millimeters - which is the average length of a *man's* outstretched arms.

